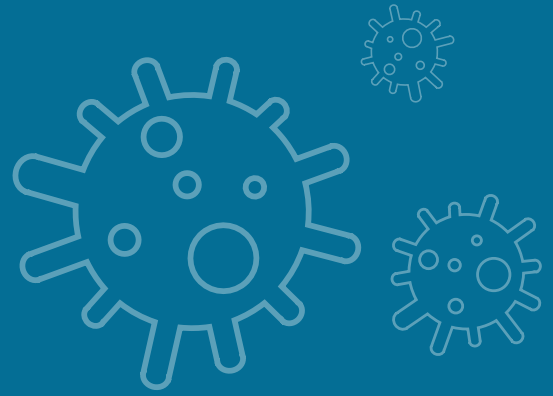




COVID-19 VACCINE PHASE 1 FACT SHEET

LAST UPDATE: January 11, 2021



WHO WILL GET THE VACCINE?

HOW CAN I GET VACCINATED?

PHASE 1A

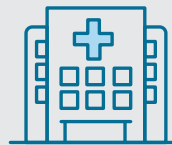


Healthcare Workers

- Healthcare workers doing direct and COVID-facing work (clinical and non-clinical)
- Medical First Responders (paramedics, EMTs)

Residents in Long Term Care Facilities

HOSPITAL AFFILIATED PHYSICIANS



The California Department of Health is working with large hospital systems and other multi-county entities (MCEs) across the state that will receive vaccine allocations. If you are a member of a health system or MCE that spans more than 3 counties, you should start by contacting their administration for vaccine availability and timeline.

PHASE 1B



1B Tier One:

- Those at risk of exposure at work in the following sectors: education, childcare, emergency services, and food and agriculture

1B Tier Two:

- Individuals 65 -74 years of age
- Those at risk of exposure at work in the following sectors: transportation and logistics; industrial, commercial, residential, and sheltering facilities and services; critical manufacturing
- Congregate settings with outbreak risk: incarcerated and homeless

NON-AFFILIATED PHYSICIANS



Health care providers not affiliated with a large hospital system or other qualifying MCE should complete the following survey to "self-identify" as a qualified provider:

[COVID-19 Vaccination Survey for San Mateo County \(Phase 1a\)](https://bit.ly/3nppa9R)

OR type in: <https://bit.ly/3nppa9R>

Completing this form gets you into the SMC queue, which prompts two actions:

- You will be notified via the contact information provided in the survey when vaccines become available for your group.
- You will be invited to join weekly provider calls about the SMC COVID-19 Vaccine Program. Any questions regarding when your group would be contacted to receive the vaccine would be answered during those weekly provider calls, which will take place Monday mornings at 8:30AM.

It is also recommended that you periodically check San Mateo Counties County's COVID-19 website at www.smchealth.org/coronavirus. There are links to the vaccine page and other information at this site.

PHASE 1C



- Individuals 50 -64 years of age
- People 16-64 years of age and have an underlying health condition or disability which increases their risk of severe COVID-19
- Those at risk of exposure at work in the following sectors: water and wastewater; defense; energy; chemical and hazardous materials; communications and IT; financial services; government operations / community-based essential functions

SOURCES

COVID-19 Vaccination Plan, San Mateo County, December 4, 2020;

The Advisory Committee on Immunization Practices' Interim Recommendation for Allocating Initial Supplies of COVID-19 Vaccine — United States, 2020; Weekly / December 11, 2020 / 69(49):1857-1859